

## From your local Alderman

By the time you get this newsletter, Christmas and the silly season will be fast approaching. I wish all the folks of Fern Tree a happy and safe Festive Season, and hope to see you at the Carols on the 19th.

The Carols we hold up here in Fern Tree must be some of the best in the City - folks from "down there" tell me they come up here in preference to the big ones held in St Davids Park!

Remember, if you are going on holidays to let your neighbours know so a weather eye can be kept for unwanted visitors. And think about fire protection - if in doubt, call our doughty Fire Brigade Chief Don Jones for advice on clearing your block and what to do in the event of emergency.

Hobart Council has been busy sorting out our traffic problems. The major work at the vehicle turning facility at the Tavern is complete bar the signage - if you have problems still with the traffic islands, please let me know. The minimum t-junction proposal at Huon Road-Pillinger Drive will need some refinement - I'll let folks know in January what will be proposed because there appears to be a clash between the cultural heritage alignment of the existing road, and any moves to improve traffic movement! The road was designed in 1898 for horse and carriage traffic and there is some opinion by cultural heritage experts it should be kept that way.

On May 3 1999 Council agreed to participate in the Cities for Climate Protection Program. So far we have established an inventory and forecast for key sources of greenhouse gas emissions in the Council and the community. More on this as Council progresses to deciding on setting an emissions reduction goal and develops a local greenhouse gas action plan to achieve the reduction.

Once again, a happy and safe holiday for everyone. Merry Christmas, Salubrious Solstice and Happy Hogmany!

— *Alderman Eva Ruzicka*

## Pillinger Drive to be closed for New Year's Eve

Mount Wellington will be one of the first points of Tasmania (leaving aside Macquarie Island) to receive the morning sun on New Year's Day 2000, which makes it a focus of national attention. Hobart City Council has decided to prevent motor vehicle access to the summit. From 8am (that's morning) on New Years Eve until 9am on New Years Day, Pillinger Drive will be closed to all traffic except P-D residents' vehicles and those of residents' visitors. More information is available from Hobart City Council.

## Good times, good returns from community events

Big efforts by FTCA Committee members and some dedicated helpers have paid off for the Association recently.

A well-attended All Hallows Trivia Night at the Tavern, raised \$317.00 for the Association. Most importantly, it was another excellent trivia night enjoyed by all. Prue Quarmby, who stepped into Tony Elliott's quizmaster role, deserves special praise, but it was a team effort with many contributing.

On 6 November, referendum day, we brought in another \$320, including \$150 in rental for use of the Centre as a polling booth and \$170 from a very successful cake stall. Thanks to all our helpers and supporters.

The Fern Tree Community Association Inc. is a non-profit group set up to serve and represent the community of Fern Tree. Meetings open to all residents elect a committee each year to conduct the Association's business.

Address all correspondence to: *The Secretary, Fern Tree Community Association, 8 Stephenson Place, Fern Tree 7054.*

The *Newsletter* is published 5-6 times a year and is distributed throughout the Fern Tree area by volunteers.

Offers of assistance with distribution are welcome. Paid advertisements are accepted: \$20 for a full page, \$10 per

½-page, \$5 per ¼-page, payable on placement of the advertisement

Find us on the Web at <http://www.tased.edu.au/tasonline/ferntree>



# Fern Tree Community Association Inc. Newsletter

[www.tased.edu.au/tasonline/ferntree](http://www.tased.edu.au/tasonline/ferntree) DECEMBER 1999



Come to the  
**Bower Park**  
(opposite the  
Tavern) at  
**8 pm**  
**on Sunday**  
**19 December**

to  
sing with  
the angels  
at the  
Fern Tree

# Carols by Candlelight

Special residents' meeting at Community Centre on 14 December to discuss next year's *Mountain Orchestra* project: see pp. 4-5



## Chris Wisbey, voice group to lead us in 1999 Carols

On Sunday evening,  
19 December,  
come and celebrate  
Christmas in Fern Tree  
at our annual Carols by  
Candlelight.  
The ABC's Chris

Wisbey has agreed to be Master of Ceremonies (joining a long line of distinguished comperes including Chris's former radio colleague Bob Curé). He will be joined by the 20-member voice ensemble "Big on Bass". Una Harbinson will again be accompanist.

Chris, Una, Big on Bass and the helpers on the night are all giving their services free of charge. Fern Tree's Carols by Candlelight is entirely non-commercial. This, combined with the intimate atmosphere and mountain setting, has for many (including people from elsewhere around Hobart) made Fern Tree Carols a popular alternative to the "big event" at St David's Park.

Join your Fern Tree friends in this special celebration of Christmas. Carol sheets and candles can be obtained on the night.

If the weather turns against us, the Tavern dining room has again been made available for the Carols (thanks Susan).

## Why Fern Tree is different...

The 6 November vote on a republic underlined something many of us have long believed: Fern Tree people are different from other Australians.

The national vote was about 55 percent "no" and 45 percent "yes". In Tasmania the difference was even more pronounced: 64.7 percent "no" and 35.3 percent "yes".

Locally, however, it was a very different story. The Fern Tree polling booth recorded a vote of 67 percent "yes" against 33 percent "no".

We were also inclined to be more positive than the rest of Tasmania and Australia on the

preamble question (though it still didn't manage a majority here). Nationally, the preamble was opposed by around three of every five voters, but at Fern Tree it was nearly 50-50 (53 percent "no", 47 percent "yes").



## Neighbourhood watch.

Some recent burglaries in the Fern Tree-Neika area are a reminder of the continuing need to keep a watch out for people behaving suspiciously or the presence of unknown vehicles. Remember that while burglars can be active at night, they are also at work during the day when many households are unoccupied. The vigilance and quick response of a resident who raised the alarm after spotting a pair of very suspicious characters trying to make a getaway enabled police to make an arrest recently — but it's unfortunately a rare success.

Give lollies to the Brigade, and tell the kids...

## Watch out for the Firemen!



For the 1999 Fire Brigade Lolly Run Appeal, Melissa and Doug have kindly placed a box in the shop for donations of sweets. Bring some in and drop in the box, or (better) select from Melissa's and Doug's great selection.

On Christmas Eve... Listen for the siren in your street for the big lolly drop.

## Fern Tree Playgroup—every week

Fern Tree Playgroup meets weekly at the Fern Tree Community Centre (Stephenson Place, next to the shop) each Monday, 10.00 to 12.00. Just bring \$2 and a piece of fruit. Contact Kate Bucher, 6239 1540 or Trudy Disney 6239 1353.

## Springs proposals raise community concerns

*Following is a precis of major points of a submission to Hobart City Council on development proposals for The Springs, prepared for the Association by Eva Ruzicka and Judy Sprent. The two proposals are Building Integrity (previously Laver Consortium) and The Springs Consortium (Gunn's). Both consortia consulted the FTCA. Their proposals have been on display at the Council Centre during November.*

### Introduction

While we accept the need for significant improvement of public facilities at The Springs, we favour provision of low key infrastructure that meets long expressed public desires.

More intensive land use at The Springs can be considered only if the access road through Fern Tree and beyond Bracken Lane is addressed. Equally, issues of the surrounding residential and community/business amenity, water catchment protection, fire management, cultural, heritage and natural protection must be considered.

*Major concerns of the Fern Tree community*  
The major concerns that arose out of our community consultation are:

- the impact on our General Store and Tavern, upon opening of business at The Springs and in the long term; and
- the state of road access to The Springs from Fern Tree if either of these developments go ahead.

Development of The Springs could drag down local businesses, taking custom away from the Tavern and General Store which they need to survive. Road access is equally problematic. Pillinger Drive was designed for horse-drawn vehicles and is now very substandard.

### Conclusion

The Building Integrity design is clearly on the cutting edge of sustainable development in wild places. The Association appreciates the concern shown for problems of water collection, grey water and waste disposal, as well as fire management (such as providing the tarn). The aesthetics of their design, the effort put into siting and size

of the buildings, the finishes (especially the grass roofs), the recognition of the social value of the old Springs Hotel site by leaving in its current state, are very commendable.

The Springs Consortium design, on the other hand, requires outside infrastructure while totally consuming open space at The Springs. With its 70-space carpark, realignment of the road with loss of public picnic facilities and conversion of public open space facilities to user-pays access facilities only, it appears more suited to a location like Wrest Point. Siting picnic facilities on the edge of a large carpark cannot be considered best practice in this environment.

We accept public facilities at The Springs need improving. Some aspects of each development go toward meeting the public's often stated desires for particular types of development on the site. But the Association wants to see the justification for accommodation at The Springs, and how it can be truly sustainable. Overall, neither proposal is favoured at this stage because each has some conflicts with the Site Development Plan and surrounding communities which must be resolved. The Association hopes that public input at this stage will be sufficient to generate significant design changes so that any further proposals are more in keeping with the site, preferably without accommodation, and are financially and ecologically sustainable.

## Bike, fire strategies discussed

The Wellington Park Management trust has released management strategies for the riding of bicycles (mainly off-road mountain bikes) and for fire on the Mountain. The draft bike strategy seeks to provide a framework for use of mountain trails by bike riders which does not unduly harm the natural environment and takes due account of other users. It provides for use of fire trails by bike riders and incorporates a draft code of conduct. The fire management strategy recognises the potential use of fire on the Mountain as a management tool, and recommends a wide range of actions to reduce wildfire risk, control weeds and improve authorities' ability to fight wildfire.

Both plans are available from the Wellington Park Management Trust (tel. 6238 2176).

## Roadworks: more news

Since our last newsletter readers will be well aware that the new works at the front of the Tavern have come close to completion, with signage and final road markings and traffic island placement the major outstanding tasks. There is still some concern on some safety questions, namely the best location of the southern traffic island for maximum pedestrian and driver safety and difficulties some Summerleas Road drivers are having with the exit from the Tavern. These concerns are being discussed with HCC officers with reasonable hope of a satisfactory outcome.

A longer-term concern has arisen out of a report by HCC consultants Pitt and Sherry, who have advised against early roadworks on the Huon-Pillenger junction because of uncertainties about heritage matters. Our President, Torquil Canning, has advised the Council that while the FTCA supports consideration of heritage in any public works, it is opposed on road safety grounds to any undue delays.

More discussion of these and other Council matters is provided in the back page column of our local Alderman, Eva Ruzicka, who has been seeking to have work to improve the junction undertaken in the current financial year, as originally envisaged.

## The new millennium

Products are being named after it. Parties are being organised around it. Sky-high overtime rates are being requested for Millennium Eve. Parties are being organised on our summit. Roads are being closed by the council. Politicians mention it in every second sentence (do they hope to imply that their policies will hold for the next Millennium?).

What is it that is special about next year? It is only that the date will have an unusually large number of zeros. And that is an incidental consequence of the fact that *Homo sapiens* evolved with ten fingers. If we had developed with eleven fingers next year would be 1559, and if we had nine it would be 2662.

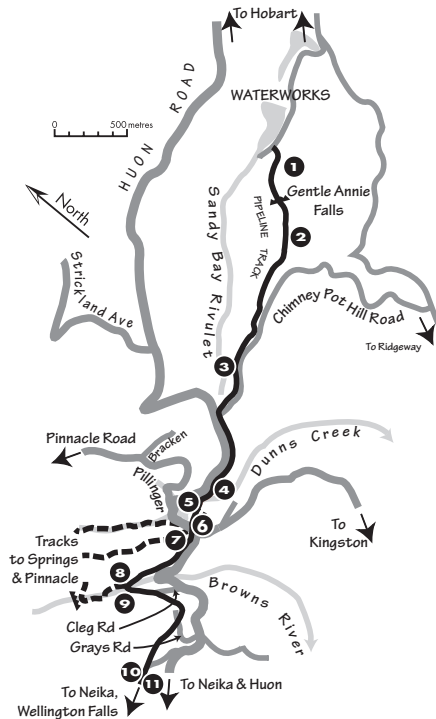
At least the latter would be a leap year. —  
Mike Emery

## Pipeline Project: update

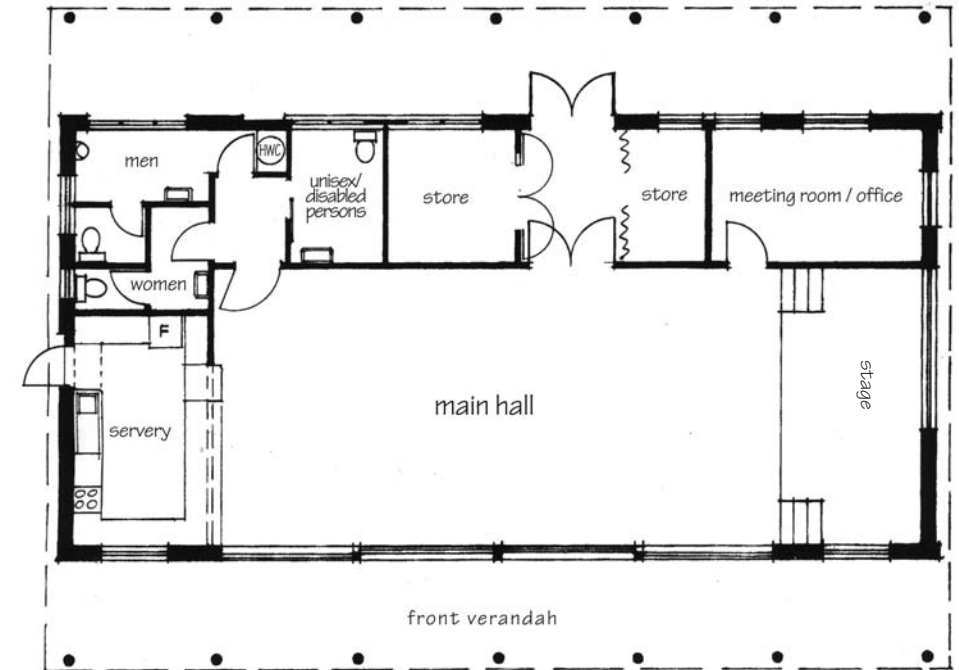
Following our success in securing a Federation Fund grant for this community project, an FTCA subcommittee led by Eva Ruzicka is busy with a lot of behind-the-scenes consulting and some hard thinking about size and content of the interpretation signs. The initial task of determining the number and location of signs, in consultation with HCC, Wellington Park Trust and Hobart Water officers, is basically finished following an on-site inspection and a number of meetings.

The numbers in the map below indicate sign locations. They are: 1 Gentle Annie Falls; 2 McDermott's Farm; 3 Halls Saddle; 4 Aqueducts (1); 5 Aqueducts (2); 6 Stephenson Pl.; 7 Bower Park; 8 Bower (1); 9 Bower (2); 10 Wishing Well (1); 11 Wishing Well (2).

Over the next few months the task will be to complete research and texts for the signs, determine the illustrations and get design and sign manufacture under way.



## Plans take shape for renewed Fern Tree Community Centre



John Harbinson has generously given his valuable architectural knowledge to the task of remodelling our Community Centre to improve its "rentability" for groups and individuals. Work will start as soon as building approval enables contractors to be engaged.

The FTCA committee decided earlier this year that it was time to use available funds to improve facilities for meetings, seminars, youth groups, private functions and other community activities. A residents' general meeting approved preliminary plans.

The plan above shows proposed changes to the centre as drawn up by John. The current office space becomes a servery, allowing removal of the sink-refrigerator-stove clutter at the corner of the hall. The small WCs installed for kindergarten use will be removed, and new toilets will provide for separate women's and men's toilets as well as a "unisex" toilet for disabled visitors (also doubling as a second toilet for either gender). A new wall separates the disabled toilet from a

new storage area which opens off the rear lobby. With new shelving this store-room can comfortably accommodate the material currently in the corner room adjacent to the stage. A further storage space will become available with the relocation of the door between the lobby and the main hall.

The corner store-room next to the stage will become an office and meeting room. This can also be used by groups using the Centre for seminars, where a second working space is needed. The meeting room can be heated more economically than the main hall, which is currently used for FTCA committee meetings. Heating in the main hall will be improved with installation of infra-red heaters, as used by the Fire Brigade.

The main cost of the modifications will be in plumbing, but John's design minimises structural changes to keep costs down.

In the longer term the Association is looking at enlarging the hall and major improvements to outside areas — more on that next issue.



# — *The Mountain Orchestra* —

‘bringing music and art to the mountain’

**An Invitation is extended to the people of Fern Tree to become part of the Mountain Orchestra.**

Participants in this exciting community project, culminating in a performance on the Mountain next April, will have the opportunity to work with an instrument maker and composer in the making of

**large sculptural instruments.**

### *People wanted*

- People with trades skills – plumbers, builders, welders, boilermakers.
- Lovers of music.
- Lovers of the mountain.
- No previous musical experience necessary.



### *Workshops*

Weekly workshops in instrument making and performance will begin in January and continue through February and March.

### *Initial meeting*

Fern Tree residents are invited to a meeting at 8.00 pm on Tuesday 14 December at Fern Tree Community Centre, 8 Stephenson Place.

**Instrument Maker**

**Strato Anagnostis**

**Composer**

**Raffaele Marcellino**

For more information and to register your name contact **Chris Cooper** on 6223 4656 or **Torquil Canning** on 6239 1570 or drop a note in the FTCA letterbox at 8 Stephenson Place.

The mountain orchestra is part of the development of the Mt. Wellington Festival, to be held in April 2000. The project, funded by Arts Tasmania and the Hobart City Council, is a cooperative venture between the Fern Tree Community Association and the Mt. Wellington Festival Project.